

---

1

2

3

50-100

4

5

8

50%

36

6

..... - 5 -

..... - 5 -

..... - 5 -

..... - 5 -

..... - 6 -

..... - 7 -

..... - 8 -

..... - 8 -

..... - 9 -

..... - 9 -

..... - 9 -

..... - 10 -

..... - 11 -

..... - 11 -

..... - 11 -

..... - 11 -

..... - 12 -

..... - 14 -

..... - 14 -

..... - 16 -

..... - 21 -

..... - 21

..... - 22 -

..... - 22 -

..... - 24 -

..... - 24 -

..... - 25 -

..... - 29 -

..... - 29 -

..... - 32 -

..... - 32 -

..... - 34 -

..... - 35 -

..... - 36 -

..... - 38 -



- 
- 
- 
- 
- 
- 

1

2

3

4

5

6

7

8

9

10

11

12

13

1

2

3

4

5

6

7

8

1.

2

3

4

5

6

7

8

9

10

11

12

1

2

3

4

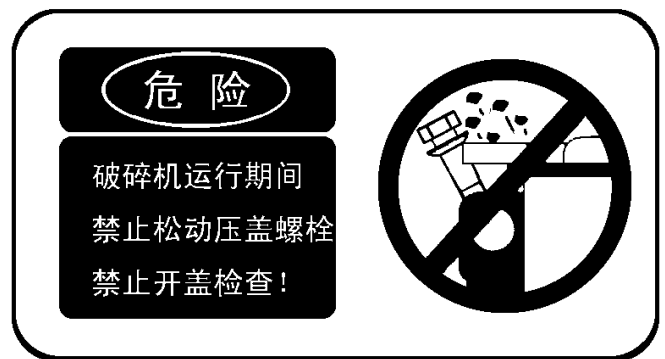
5

6

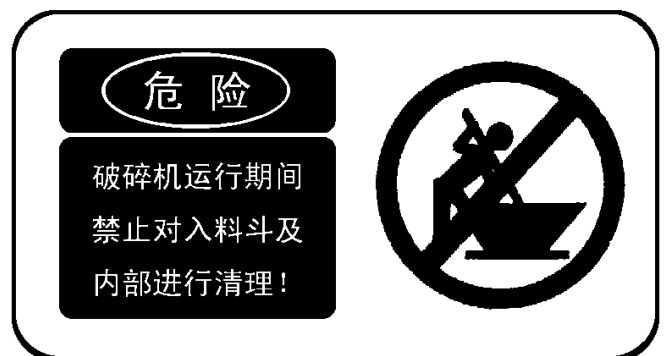
7

8

1



2





CF

800mm

150MPa

150MPa

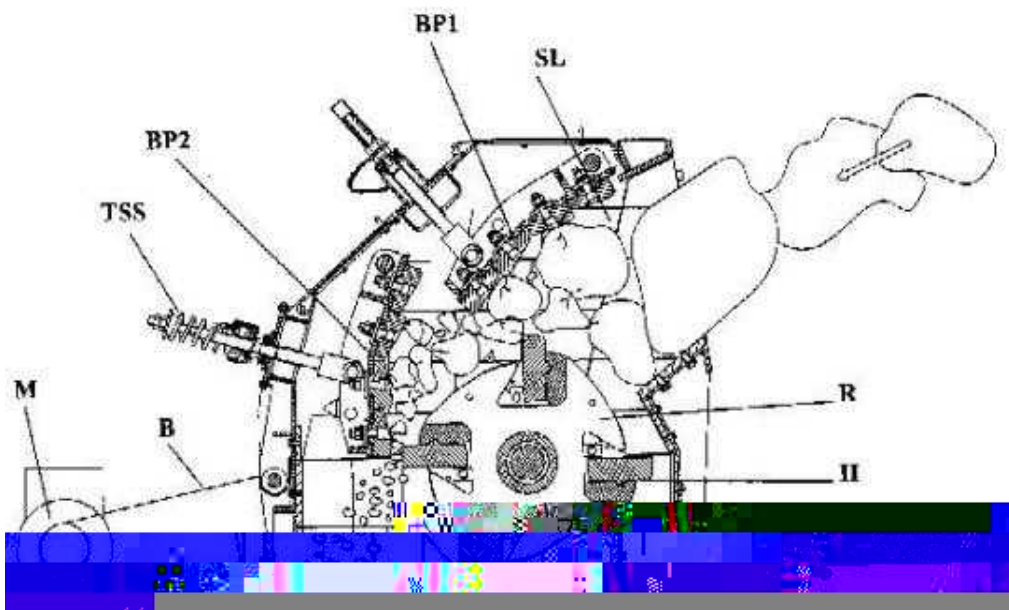
1.

CF250/CF250C CF400/CF400C

		CF250 / CF250C	CF400/CF400C
	mm <sup>2</sup>	1360 x 972	1360 x 975
	mm	1200	1300
	mm	1300	1300
	mm	750	950
	mm	50/ 120	80/ 200
	t/h	180 300	280 500
	r/min	700	700
	KW	160 200	200 250
	t	18	21
( x x )	mm <sup>3</sup>	3515x2430x2828	3669x2430x2940

- (1).
- (2).
- (3).
- (4).                                    150MPa                                    10%
- (5).                                    80%

1



1

.  
CF



93 dB



.

1.

;

2.

,

3.

4.

5.

4

6

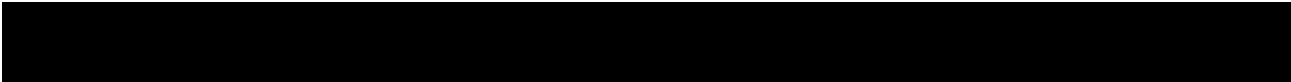
7

CF

8.

9.

41



.

1.

1.1

1.2

1.3.

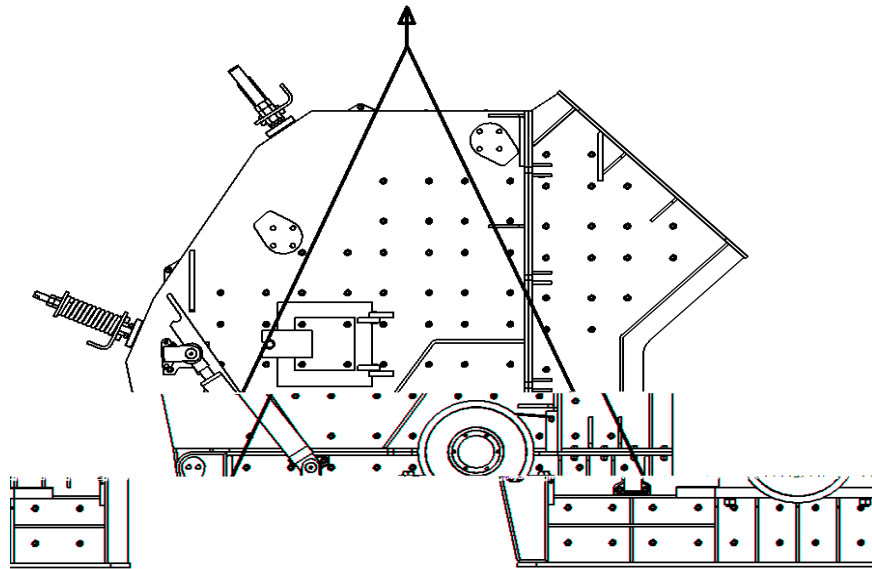
2

2.1

3

2.2

2.3



3

3

3.1

3.2

2mm

3.3

1/2 L

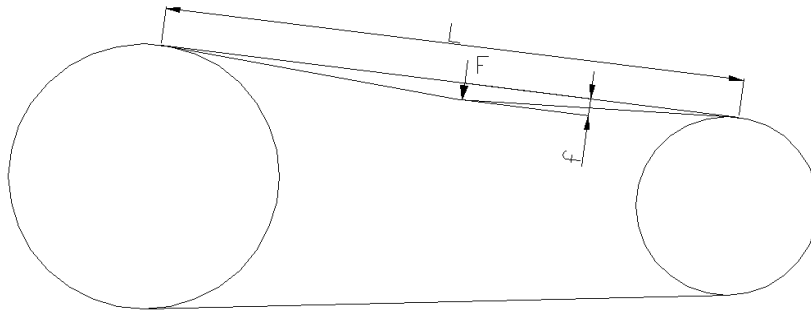
f =

1.6 x L

F

4

		F
	1.6	N
SPC [25N(8V)]	224 355	60 90
	375 560	90 120



4

3.4

3.5

4.

4.1

300mm

1000mm

4.2

4.3

5

5.1

2m

5.2

5.3

5.4

1

1.1

1.2



1.3

1.4

380

1.5

1.6

2

2.1

2.2

2.3

10um

2.4

10Mpa

2.5

2.6

2 3

10Mpa

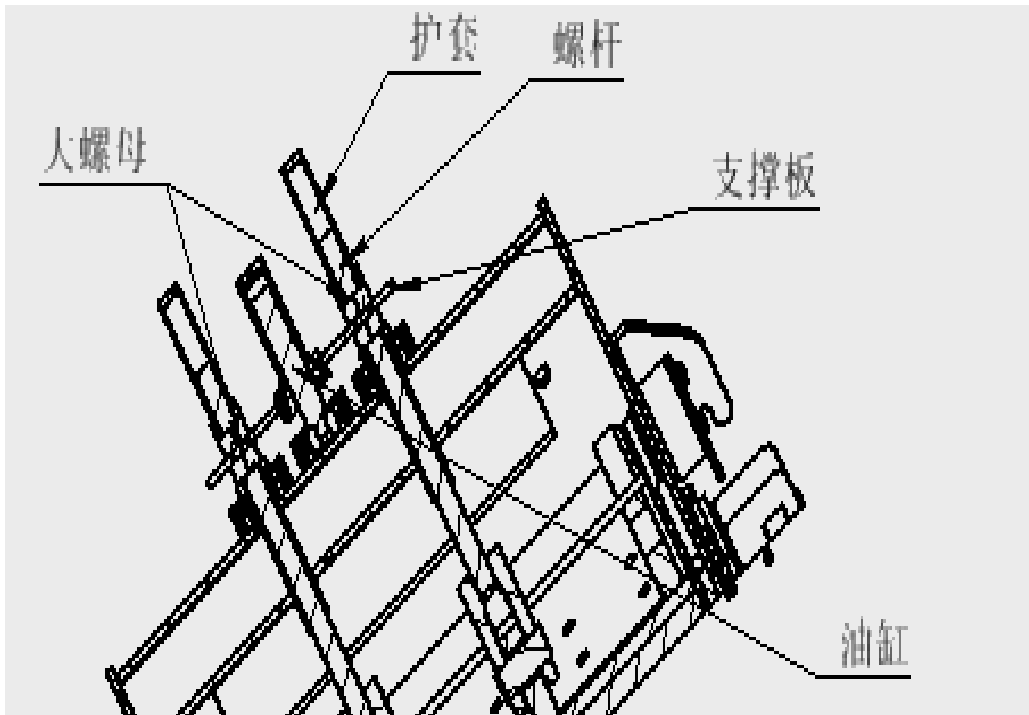
2.7

2.8

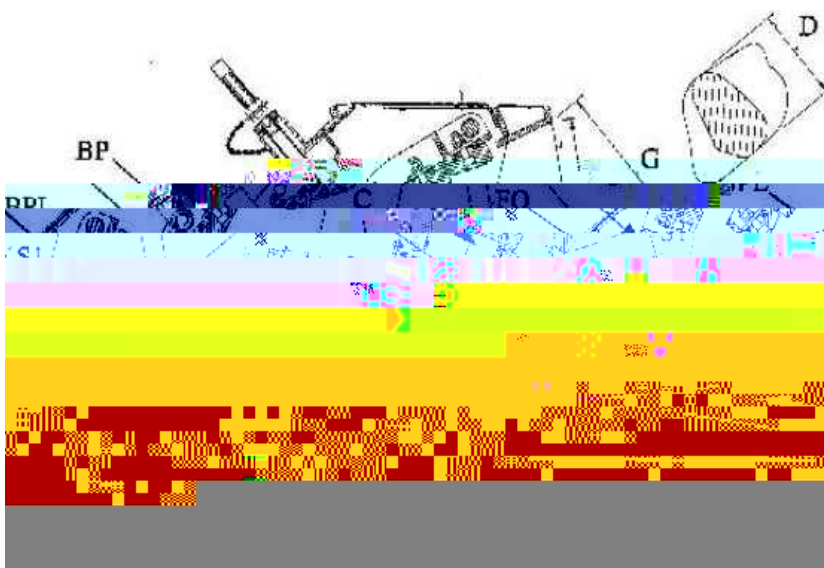
2.

6 S1

5 6



5



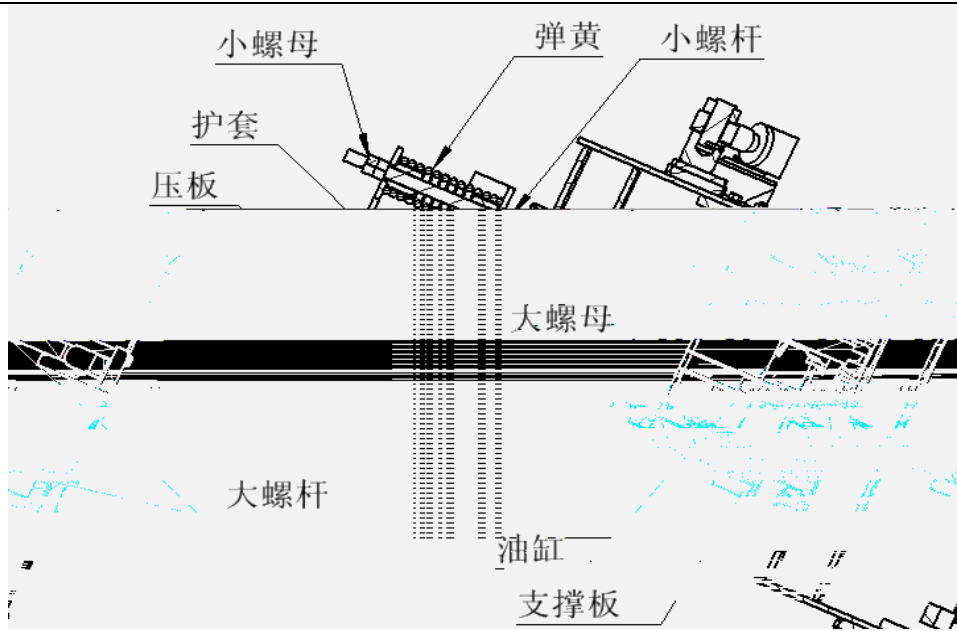
6

3.1 S1

3.1.1

S1

3.1.2 ~~0903Huet4u9et0C~~



7

4.1 S2

4.1.1

4.1.2

S2

4.1.3

S2

4.1.4

4.1.5

, S2

4.2 S2

4.2.1

4.2.2

4.2.3

S2

4.2.4 S2

S2

4.

4.1 7

4.2

4.3

1. 8 16  
4

2.

3.

( )

4. 35  
75

1

2

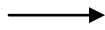
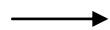
5.

6.

5



6



7



8

9

10

11

12

1

13

8

14

100

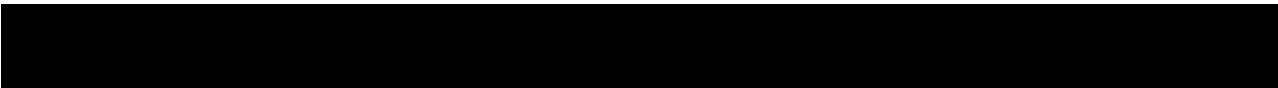
. (

HP-R

CF250 90 /

CF400 120 / )

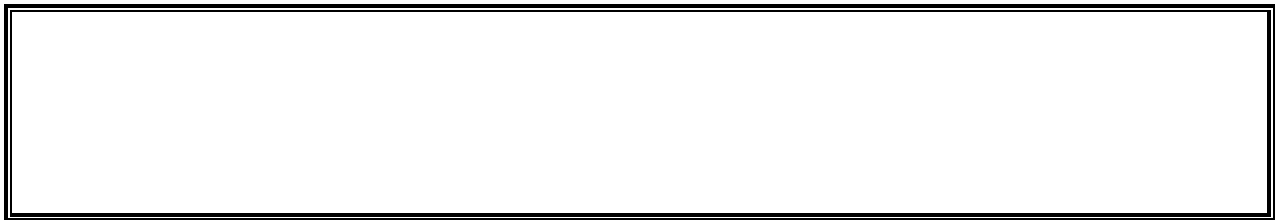
15



CF

8-10

- 1
- 2
- 3
- 4
- 5.



1

50~100Mpa      50~72      100~150Mpa  
30~48  
1/2  
2/3

2

46#      68#

3

50  
50~100

4



1

2

3

4

5

1.

,

,

2

,

,

,

3 , , , , ,

4 , , , , ,

5. , , , , ,

6 (ZL-3 )  
 1000 ;4 3000 ;6 4000 ;8 10 ,7000 .  
 1/2 2/3

7 , , , , ,

8 , , , , ,

, , , , ,

9.

		.
		.
		.
		.
		.
		.
		.
		.
		.
		.
		.
		.
		.
		.
		.
		.
		.
		.
		.

		,
		.
		.
		.
		,
		,
		,
		,
		,
		,
		.
		,
		.
		,
		,
		,
		.
		,
		,
		,
		,
		.
		.
		.
		.
		,
		,
		.
		.
		.
		.
		.



		MJZ SM	
		4	1
1			
2			

		1
3		
	1	1
	1	1
	1	1
	1	1
4		
	1	1
	1	1
	1	1
	2	2
	2	2
5		
		2

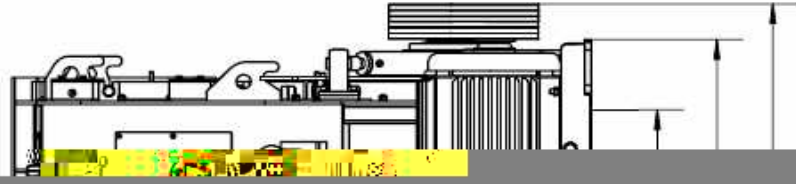


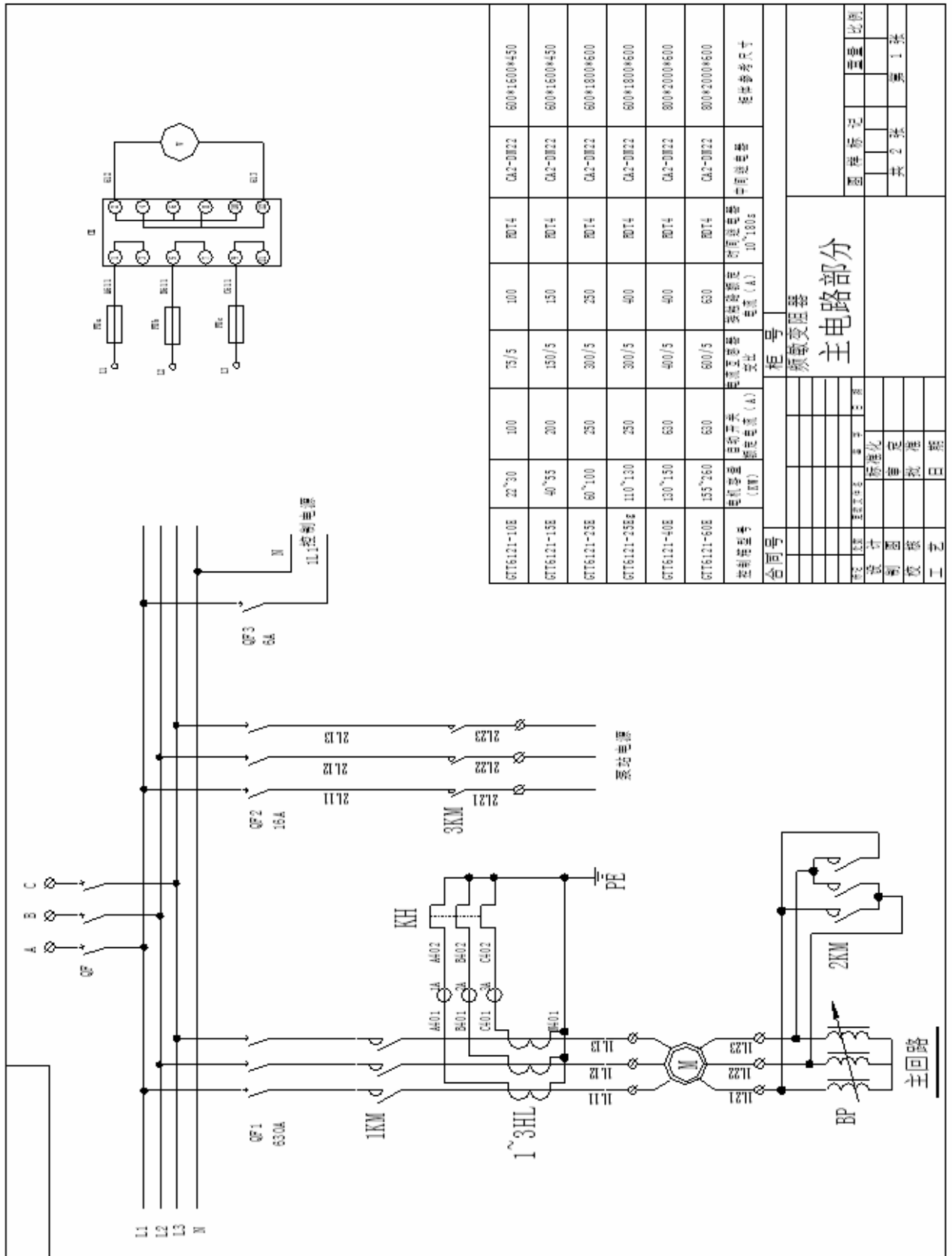
1. CF250/CF250C



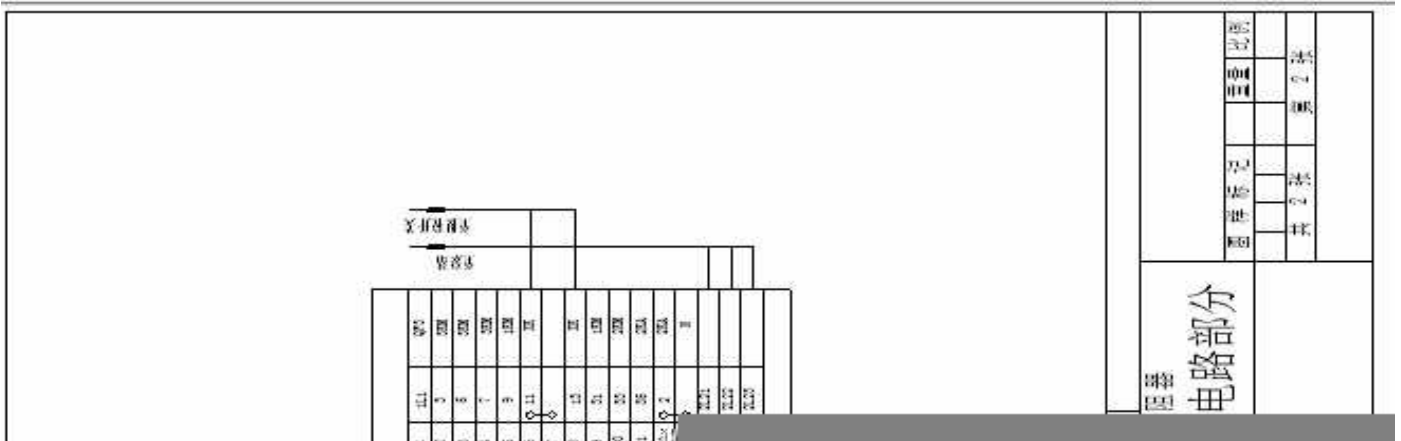


2. CF400/CF400C





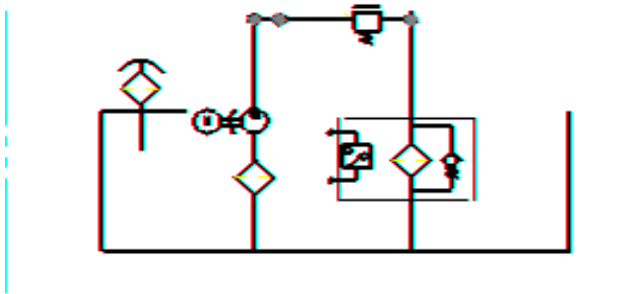
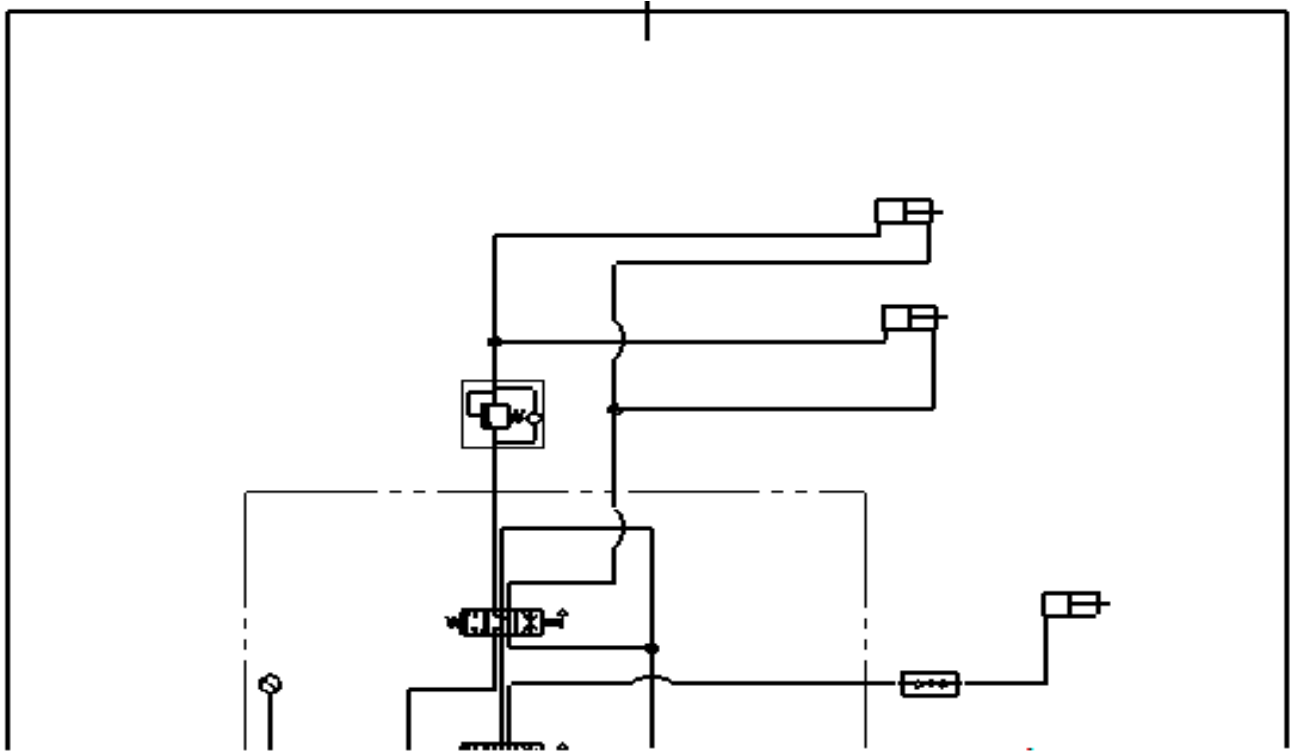
柜号		频率变频器	
<b>主电路部分</b>			
图号	图例	数量	比例
		1张	1:1



1.			QF		QF1		QF2			
		QF3			1KM	2KM		BP		
			3KM							
2.										
2	1				XK			QF		
		QF1	QF3	S12		HG		SB21		
		1KM		M		BP				
			1KT	1KT		90	2KT	2KT		
			1KT	5~10	1KT	1KA	2KM			
		BP		M			2KM	2KT		
		2KT		HG		HR		time		
2	2		SS21	1KM	1KT	1KA	2KM	M		
			S11							
2	3			2KT	2KA		1KM	1KT	2KT	
			1KT		2KT		5~10			
		1KT			2KM			BP		
		2KT		2KA		2KA	13	15	1KM	
					BP			2KA	7	35
		YF								

3.

		QF1	QF2	S12
	3KM			
XK			XK	



- 技术参数
1. 泵站工作压力: 10MPa.
  2. 泵站油泵排量: 10ml/min.
  3. 泵站过滤精度: 10um.

<b>液压系统</b>												
区	图号	文件号	签名	年、月、日						标志	数量	
比例	图例				比例					设计		
					1:1					审核		
总编			共	张	第	张					工艺	

